



## DESIGN E

# EDEN

## 2 Bedroom

### Area Dimensions

Floor Area	88.80m <sup>2</sup>
Garage	21.50m <sup>2</sup>
Porch	1.07m <sup>2</sup>
Patio	28.30m <sup>2</sup>
Pergola	16.70m <sup>2</sup>
<b>TOTAL</b>	<b>156.37m<sup>2</sup></b>



Large, private, fully fenced, exposed aggregate courtyard

### Bedroom 1

3.5 x 3.5

(clear of robe)

- Large built-in mirrored robe
- Built-in TV cabinet
- Telephone point
- Ceiling fan
- Direct access to rear courtyard

### Bathroom

- Spacious design
- Seat in shower
- Toilet
- 2-way access from Bedroom 1

### Separate W/C

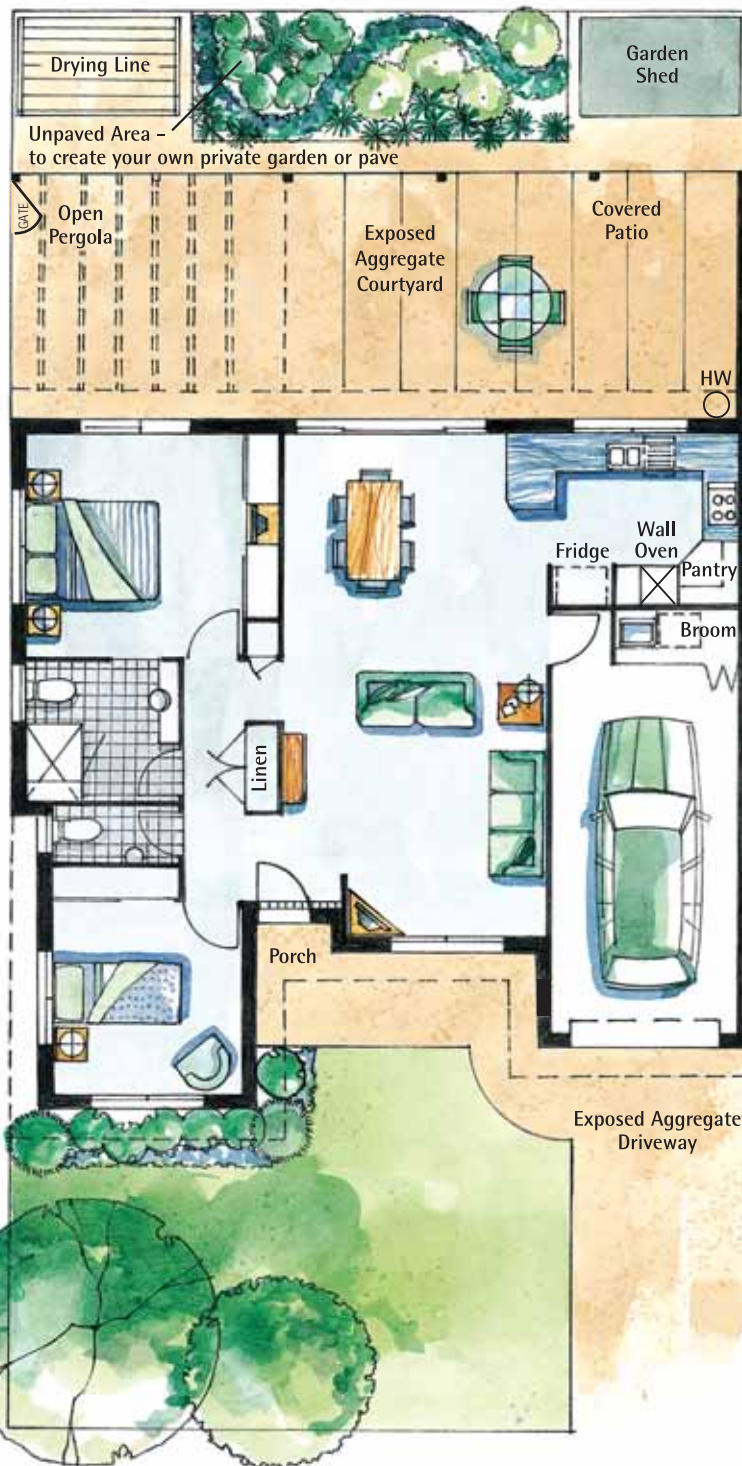
- With additional hand basin

### Bedroom 2

3.0 x 3.0

(clear of robe)

- Built-in mirrored robe
- Ceiling fan



### Brick Privacy Wall

- Full height to maintain privacy

### Kitchen

- Spacious modern design
- Overhead cupboards to ceiling
- Stainless steel appliances
- Large walk-in pantry

### Dining/Living

3.8 x 8.0

- Extra large open plan
- Easy access to kitchen and outdoor covered pergola
- Ceiling fan

### Laundry

- Compact design
- Concertina doors
- Extra broom cupboard

### Garage

3.0 x 5.8m

- Automatic roll-a-door
- Internal access